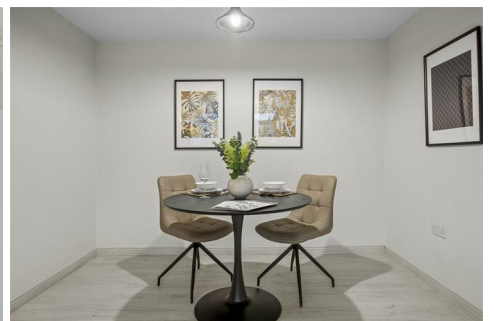




# FORD & PARTNERS

ESTATE AGENTS



## 39 Dewwood Court Pettifer Way, High Wycombe, HP12 3UH

**\*INCENTIVES AVAILABLE | 50% OFF FIRST MONTHS RENT | FREE TOASTER, KETTLE & MICROWAVE! \***

Introducing Dewwood Court, a stunning collection of just six newly renovated two bedroom apartments situated in a private development.

**\*Subject to receiving your holding deposit by 31st December 2025!**

**\*NB:** The images are of the show home.

- **50% OFF FIRST MONTHS RENT | FREE TOASTER, KETTLE & MICROWAVE\***
- **NEWLY RENOVATED TWO BEDROOM APARTMENT**
- **BRAND NEW APPLIANCES INCLUDED**
- **NEW FAMILY BATHROOM**
- **PRIVATE DEVELOPMENT**
- **ONLY A FEW REMAINING**
- **BRAND NEW STYLISH KITCHEN**
- **AMPLE PARKING**
- **GROUND, FIRST & SECOND FLOOR APARTMENTS**
- **RESERVE YOUR NEW HOME TODAY, FOR ONLY £100.00**

**£1,350 Per month**

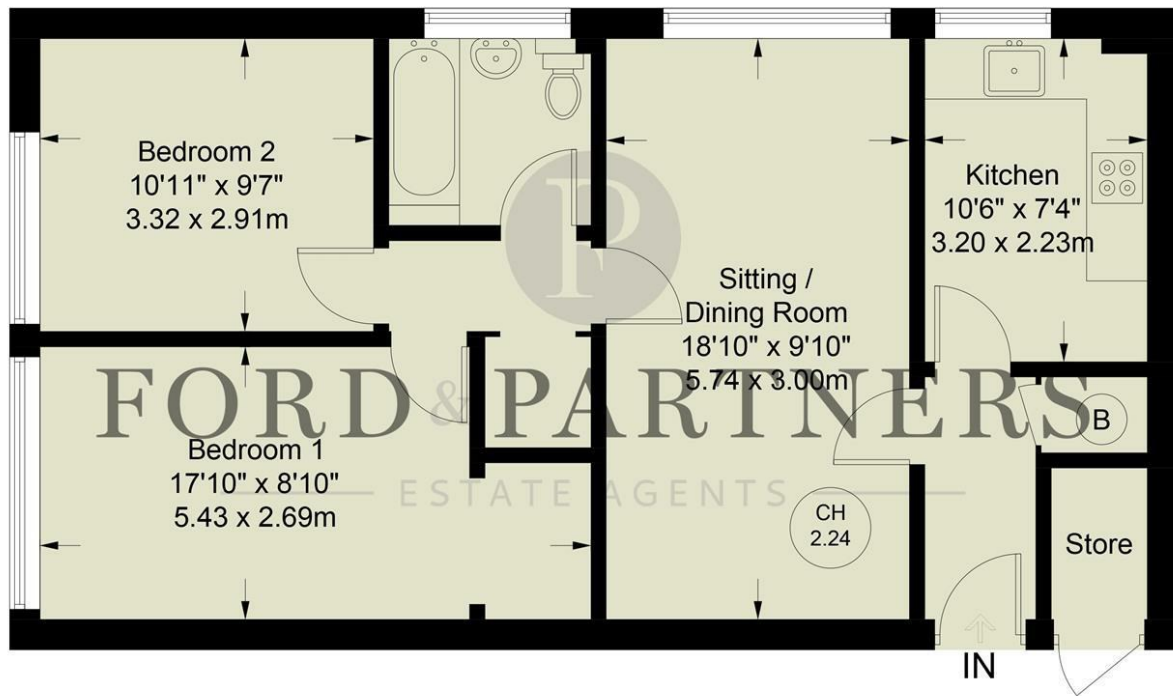


## Pettifer Way, HP12 3UH

Approximate Gross Internal Area = 660 sq ft / 61.3 sq m  
 Store = 17 sq ft / 1.6 sq m  
 Total = 677 sq ft / 62.9 sq m



CH  
2.24 = Ceiling Height



Floor Plan produced for Ford & Partners by Media Arcade ©.  
 Illustration for identification purposes only. Window and door openings are approximate. Whilst every attempt is made to assure accuracy in the preparation of this plan, please check all dimensions, shapes and compass bearings before making any decisions reliant upon them.

Energy Efficiency Rating		
	Current	Potential
Very energy efficient - lower running costs		
(92 plus) <b>A</b>		
(81-91) <b>B</b>		
(69-80) <b>C</b>		
(55-68) <b>D</b>		
(39-54) <b>E</b>		
(21-38) <b>F</b>		
(1-20) <b>G</b>		
Not energy efficient - higher running costs		
<b>England &amp; Wales</b>	EU Directive 2002/91/EC	

Environmental Impact (CO <sub>2</sub> ) Rating		
	Current	Potential
Very environmentally friendly - lower CO <sub>2</sub> emissions		
(92 plus) <b>A</b>		
(81-91) <b>B</b>		
(69-80) <b>C</b>		
(55-68) <b>D</b>		
(39-54) <b>E</b>		
(21-38) <b>F</b>		
(1-20) <b>G</b>		
Not environmentally friendly - higher CO <sub>2</sub> emissions		
<b>England &amp; Wales</b>	EU Directive 2002/91/EC	

